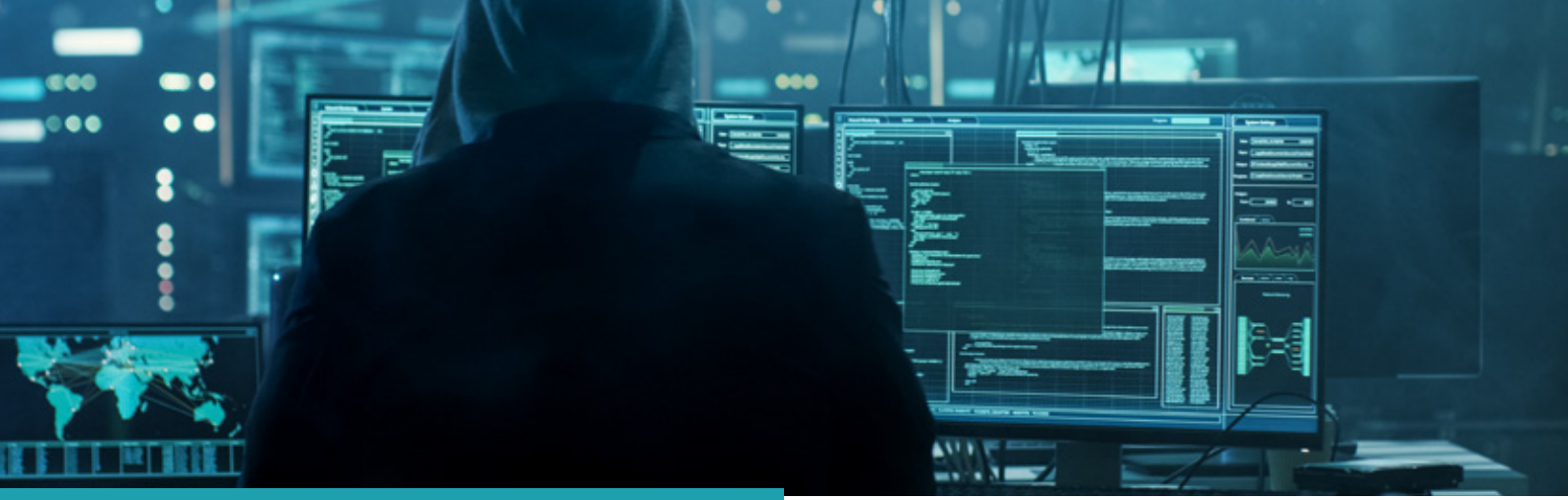


CYBER THREAT INTELLIGENCE

Combating Threats in the Cyber Landscape

CrimsonLogic Cyber Threat Intelligence suite of solutions is your ideal solution to protect your digital assets.





CrimsonLogic Cyber Threat Intelligence

CrimsonLogic Cyber Threat Intelligence is a suite of solutions that allows you to view your organisation in the perspective of an outsider prying into the organisation's possible security vulnerabilities. Our solutions have the capability to discover your organisation's vulnerabilities that could be potentially identified and exploited. It also creates an up-to-the-minute view of your organisation from an outsider's view, escalating the risks for the necessary actions to be taken to mitigate the threats.

Our suite of solutions gathers business risk intelligence from the deep and dark web, track the organisation's digital presence on the surface web and aggregate intelligence from internal or external sources. To increase your Cyber Situational Awareness oversight of your organisation, we utilise early warning indicators to guide your organisation on understanding the potential business risks involved, and how your organisation can better protect your digital assets.

Unveiling the Unseen

As technology advances, there are increasing new threats and vulnerabilities. Leaving these unchecked could result in a higher risk of business loss. Let our Cyber Threat Intelligence be the solution to empower you to be prepared of new and evolving threats.

Stay Ahead

Stay ahead by taking a proactive approach in protecting your data and organisation with the Cyber Threat Intelligence suite of solutions. Our suite provides a 360-degree view of your organisation in identifying potential vulnerabilities, gaining valuable intelligence to better combat cyber threats and attacks from happening.

Customer data



Personal identifiable information and customer records

Confidential documents



Meeting minutes, M&A (Mergers & Acquisitions) deals, remuneration information, research reports

Software and code



Software projects and internal system code

Technical configuration



Firewall settings, backup procedures and software versions

Usernames and passwords



Leaked by first and third parties

Profile squatting and false identities



Identifying impersonation and abuse

Key Features

Digital Footprint, Threat Monitoring and Investigation

Deep & Dark Web Intelligence

Intelligence Gathering & Visualization

Cyber Risk Reporting



- Scoring based on industrial benchmark
- Quantified Risk Reporting
- Peer Comparison



- Discover & Organize Internet Assets
- Detect threat infrastructure
- Act / Response on threat detected



- Compromised credentials monitoring
- Automated false positive detection
- Non-invasive integration



- Collect from external and internal sources
- Contextualise through use of Artificial Intelligence (AI)
- Single-Pane-of-Glass view



Benefits



Lowering Risk

Raises the visibility of vulnerabilities that your organisation could be exposed to, reducing the risk of data loss.



Mitigating Data Breach

Protects your organisation's network with the ability to detect suspicious IP addresses, and reduces the risk of getting your network flooded by fake traffic.



Security Efficiency

Streamlines the possible threats, allowing your team to focus on the actual security threats.



In-Depth Cyber Threat Analysis

Strengthening the overall Cyber Security Governance of your organisation by providing you a quick snapshot of the exposed vulnerabilities of your organisation.



About CrimsonLogic

CrimsonLogic is a trusted partner to governments and businesses globally. For more than 30 years, CrimsonLogic has partnered with customers to innovate sustainable world-class solutions, products and services in Trade Facilitation, eJudiciary and digital government that positively impact lives and communities.

For more information, contact us at CSG-Sales@crimsonlogic.com or visit www.crimsonlogic.com